



« Newer story | Older story »

## Swiss chocolate influences Marcel Wanders' Kameha Grand Zurich hotel

[Share](#) 108
 [Tweet](#) 94
 [Pin it](#)
[Flip](#)
[submit](#)

7 September 2015 | 2 comments

More: [Hotels](#) [Interiors](#) [Slideshows](#)

CLIPPINGS.COM  
REDESIGNING THE DESIGN INDUSTRY

Join our community of over 250 design brands

WEWOOD  
PORTUGUESE JOINERY

in.es.artdesign

innermost

deadgood

Apply to sell

Dezeen Daily



Sign up for a daily roundup of all our stories.

innermost

deadgood

Apply to sell

Dezeen Daily



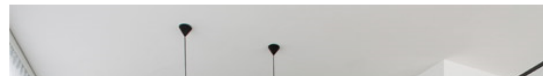
Sign up for a daily roundup of all our stories.

News



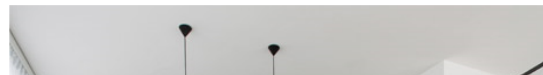
Chocolate-patterned wall panelling and sofas shaped like Toblerones feature in Dutch designer Marcel Wanders' Swiss-inspired hotel in Zurich (+ slideshow).

Amber Black  
by Simpl



Chocolate-patterned wall panelling and sofas shaped like Toblerones feature in Dutch designer Marcel Wanders' Swiss-inspired hotel in Zurich (+ slideshow).

Amber Black  
by Simpl

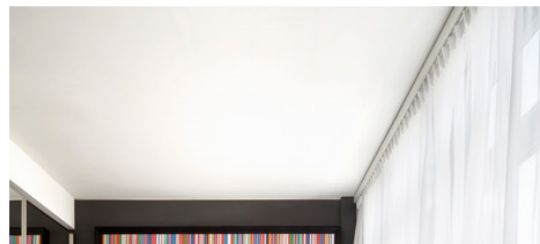


brand Moooi, used items typically associated with Switzerland to inform the interiors of the 245-bedroom Kameha Grand Zurich hotel.

Comment: "It should represent the Bauhaus principles"



Dezeen favourites: proposals for the future of transport





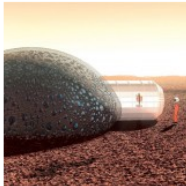
This week, Apple launched a stylus and Bauhaus Museum Dessau winners were announced



Flight 93 Memorial opens in Pennsylvania to mark 14th anniversary of 9/11



Mecanoo designs huge engineering campus for The University of Manchester



3D-printed bubble house proposed for living on Mars



Student-style accommodation for adults "is going to be the next market" says Naomi Cleaver



THE OUTBACK



THE LEVORG GT



THE XV

SYMMETRICAL ALL-WHEEL DRIVE ALL THROUGH THE RANGE\*

FIND OUT MORE

\*Excludes BRZ



SUBARU  
Confidence in Motion

Latest skyscrapers



Alongside the chocolate references, the rooms have mini-bars modelled on bank vaults – a nod to the country's renowned finance industry – and lamps that resemble oversized cowbells, also traditional in Switzerland.



"Others deliver an interior design, but we offer a reason for a visit, we create a destination," said Wanders. "A hotel should entertain, inspire and stimulate. We want the guest to have a lifestyle experience, by creating a place full of surprises and beauty."



Check out reader debates on our new comments page

com  
ments

Job of the week: architects at O'Donnell + Tuomey



Latest watch by KiBiSi for Bulbul



Interactive slideshow: explore Moooi's New York showroom



Dezeen Mail #270



The latest issue of our weekly Dezeen Mail newsletter includes the best stories and comments from readers plus new jobs, competitions, movies and more.

Dezeen Book of Interviews



Our new book features 45 conversations with leading figures in architecture and design from around the world. Buy your copy today for just £12!

Most popular

Most commented



- 1 Jimi House has a large round window inspired by abstract art
- 2 Architects produce "psychotic" movie to promote apartment
- 3 YCL adds colourful furniture to Strasbourg



MAD proposes conceptual "vertical village" for LA as alternative to sprawl

Communal spaces for guests draw from a range of other influences. They include a bar, two lounges and two restaurants – serving Italian and Japanese food, and both designed to reflect their cuisine.

**Related story:** Andaz Amsterdam Prinsengracht Hotel by Marcel Wanders



Postmodern buildings: AT&T Building, New York by Johnson/Burgee

Walls in the bar are designed to resemble panels of gold bullions, while a rug is shaped like a giant coin.



Arquitectonica creates waterfront tower in Miami with a sculptural facade



CRG Architects unveils concept for shipping container skyscrapers



Atkins starts building Vietnam's tallest skyscraper in Ho Chi Minh City

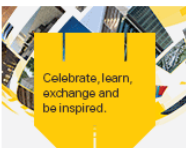
Dark surfaces and furniture were chosen to create an intimate atmosphere in the Smoker's Lounge, where photographs of people smoking are mounted on the walls and different liquors are illuminated in individual niches.



ARCHITONIC

**CASE**  
**Short Courses**

4-6 NOVEMBER 2015  
SINGAPORE



Celebrate, learn, exchange and be inspired.

Festival passes now on sale  
4 - 6 November 2015, Singapore



In contrast, the Shisha Lounge is intended to showcase a contemporary Arabic aesthetic – and is named after the traditional tobacco smoking technique using a bowl and hose that is popular in the Middle East.

- apartment
- 4 Curved lightwell cuts through 3.5-metre-wide Vietnam house
- 5 Apple launches iPad Pro and Apple Pencil for drawing

### Subscribe



- Dezeen Mail**  
(weekly newsletter)
- Dezeen Daily**  
(daily update)

you@example.com **Join**

### Follow us



# com ments

See  
our new  
comments  
page

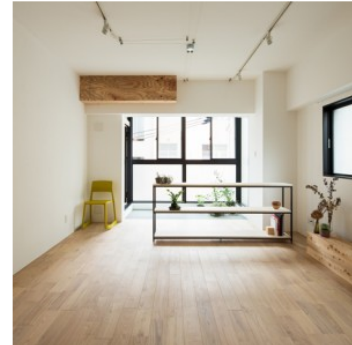
de  
zeen

### Architecture

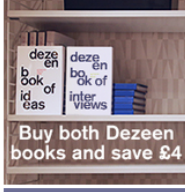


- Cultural
- Education
- Health
- Hotels
- Industrial
- Infrastructure
- Landscape/urbanism
- Offices
- Pavilions
- Public and leisure
- Residential
- Skyscrapers

### Interiors



- Exhibitions
- Health
- Hotels
- Offices
- Residential
- Restaurants and bars
- Retail
- Salons and spas



Dezeen Book of Interviews

Buy now for only £12



The hotel houses 224 Premium and Deluxe bedrooms, as well as two Executive suites and six Business suites.



Eleven individually designed Theme suites include the Poker Face suite, which features a roulette table and the walls that look like chocolate squares, and the Serenity suite that comes with yoga accessories and scented candles. Others carry titles including Ghostwriter, Fair Play, Watchmaker, and Diva Suite.



The 701-square-metre Kameha Dome event space has red fabric draped from the ceiling, which contrasts with the black and white tiled flooring.

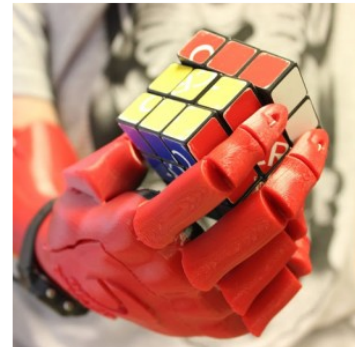


## Design



- Fashion
- Furniture
- Graphics
- Homeware
- Installations
- Lighting
- Products
- Transport
- Watches

## Technology



- 3D printing
- Apple
- Gadgets
- Robotics
- Software
- Wearables

## Opinion



- Marcus Fairs
- Dan Hill
- Sam Jacob
- Alexandra Lange
- Kieran Long
- Justin McGuirk
- Mimi Zeiger
- Owen Hatherley
- Aaron Betsky
- Will Wiles
- Reinier de Graaf
- Lucas Verweij

## Events

- 2015 <
- CES 2015
- Clerkenwell Design Week 2015
- Cologne 2015
- Design Indaba 2015
- Design Miami/Basel 2015
- DesignMarch 2015
- DMY Berlin 2015
- Geneva Motor Show 2015
- Graduate shows 2015
- London Design Festival 2015
- London Festival of Architecture 2015
- Maison & Objet 2015
- Milan 2015
- Milan Expo 2015
- NeoCon 2015
- New York 2015
- Northmodern 2015
- Stockholm 2015
- WAF 2015
- 2014 >
- 2013 >
- 2012 >
- More >

## Movies



Alongside the many custom-developed lighting and furniture solutions, Moooi furniture is used throughout the hotel, including the Love and Nest seating collections designed by Wanders. The brand also launched a range of hotel bath and shower products earlier this year.



Wanders has previously designed the interiors for the Kameha Grand in Bonn, Germany, as well as hotels including the Mondrian South Beach in Miami and the Andaz Hotel in Amsterdam.

**Related story: Kameha Grand Bonn interiors by Marcel Wanders**



Dutch designer Marcel Wanders has designed the interiors of the Kameha Grand Bonn hotel, which opens this autumn in Bonn, Germany. [More »](#)



[Architecture movies](#) [Design movies](#)  
[Interiors movies](#) [Interviews](#) [Talks](#)

**Dezeen Jobs**



[Design jobs](#) [Architecture jobs](#) [Interior design jobs](#)  
[Assistant jobs](#) [Internships](#) [Graphic design jobs](#)  
[Management jobs](#) [Sales jobs](#)  
[Industrial design jobs](#) [Product design jobs](#)

**Dezeen Watch Store**



[Benjamin Hubert](#) [Braun](#) [David Ericsson](#)  
[Denis Guidone](#) [Eone](#) [Form Us With Love](#)  
[Instrmnt](#) [Jaime Hayon](#) [Michael Young](#)  
[Mondaine](#) [Nendo](#) [Tom Dixon](#)

**Movie: interactive 3D-printed**